

Store at  
-80°C

#38365

# Human ACE2 (18-615) Recombinant Protein (hFc-Tag)

20 µg



**Support:** +1-978-867-2388 (U.S.)  
www.cellsignal.com/support

**Orders:** 877-616-2355 (U.S.)  
orders@cellsignal.com

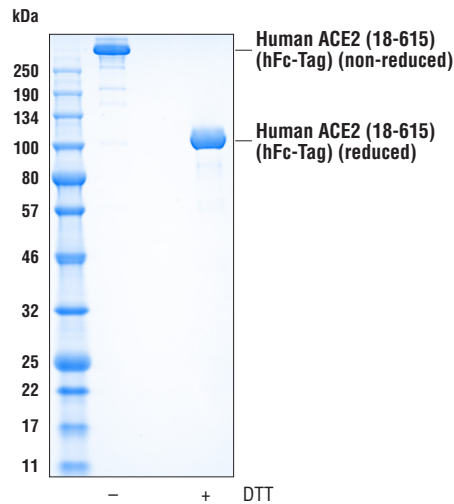
**Entrez-Gene ID** #59272  
**UniProt ID** #Q9BYF1

New 10/20

## For Research Use Only. Not For Use In Diagnostic Procedures.

**Description:** Human ACE2 (18-615) Recombinant Protein (hFc-Tag) is derived from a recombinant expression construct corresponding to the extracellular domain of human ACE2 protein, including the sequence regions that function as receptors for SARS and SARS-CoV-2 coronaviruses. The expressed protein contains a human IgG1 (Fc) Tag at its carboxy terminus.

**Background:** ACE2 is a carboxypeptidase that catalyses the conversion of angiotensin I to angiotensin 1-9, or of angiotensin II to the vasodilator angiotensin 1-7 (1). ACE2 is a critical component in the renin-angiotensin system (RAS). ACE2 is predominantly expressed in vascular endothelial cells of the heart and kidney and Leydig and Sertoli cells of the testis (2,3). The unique expression pattern of ACE2 determines its essential role in the regulation of cardiovascular and kidney functions, as well as fertility. ACE2 protein is localized mainly in the extracellular space with its carboxy terminal end attached to the membrane via its transmembrane domain. Active ACE2 enzyme is secreted by cleavage at the amino terminus. Research studies have shown that ACE2 expression is elevated in human failing heart (4). ACE2 has also been identified as the receptor for SARS and SARS-CoV-2 coronaviruses (5-7).



The purity of Human ACE2 (18-615) Recombinant Protein (hFc-Tag) was determined by densitometry after SDS-PAGE of 1 µg of protein, followed by staining with Coomassie Blue. Purity values were determined from the DTT-reduced samples (+).

**Molecular Weight:** 100 kDa (reduced); 350 kDa (non-reduced)

### Formulation:

Expression Host: Hamster (ExpiCHO cells)  
Supplied in a PBS solution (pH 7.2).

**Purity:** ≥98%, determined by SDS-PAGE.

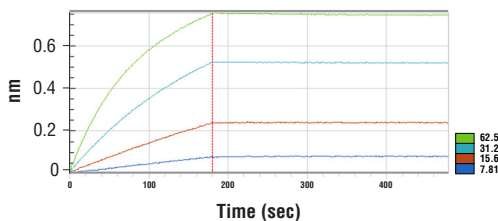
**Storage:** Stable at -80°C for 1 year after receipt. Avoid repeated freeze-thaw cycles.

### Background References:

- (1) Schmidt, B.L. et al. (2000) *J Clin Microbiol* 38, 1279-82.
- (2) Boehm, M. and Nabel, E.G. (2002) *N Engl J Med* 347, 1795-7.
- (3) Douglas, G.C. et al. (2004) *Endocrinology* 145, 4703-11.
- (4) Goulter, A.B. et al. (2004) *BMC Med* 2, 19.
- (5) Li, W. et al. (2005) *EMBO J* 24, 1634-43.
- (6) Hoffmann, M. et al. (2020) *Cell* 181, 271-280.e8.
- (7) Lan, J. et al. (2020) *Nature* 581, 215-20.

Immobilized Human ACE2 (18-615) Recombinant Protein (hFc-Tag)

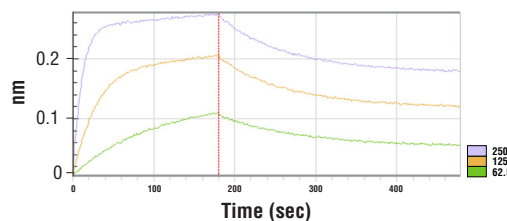
In Solution SARS-CoV-2 Spike (trimeric) (16-1208) Recombinant Protein (8xHis-Tag) #65444 – by Conc. (nM)



Binding response kinetics between Human ACE2 (18-615) Recombinant Protein (hFc-Tag) (immobilized) and SARS-CoV-2 Spike (trimeric) (16-1208) Recombinant Protein (8xHis-Tag) #65444 (in solution, at indicated concentrations). The vertical red line (180 sec) indicates addition of PBS to induce dissociation. Binding was detected with an anti-human Fc biosensor. Values on y-axis indicate binding response signals recorded for 4 different concentrations of SARS-CoV-2 Spike (trimeric) (16-1208) Recombinant Protein (8xHis-Tag) #65444 (7.81, 15.6, 31.2, and 62.5 nM).

Immobilized Human ACE2 (18-615) Recombinant Protein (hFc-Tag)

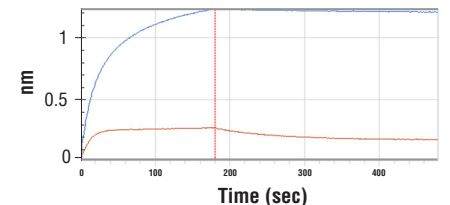
In Solution SARS-CoV-2 Spike RBD (318-541) Recombinant Protein (8xHis-Tag) #48801 – by Conc. (nM)



Binding response kinetics between Human ACE2 (18-615) Recombinant Protein (hFc-Tag) (immobilized) and SARS-CoV-2 Spike RBD (318-541) Recombinant Protein (8xHis-Tag) #48801 (in solution, at indicated concentrations). The vertical red line (180 sec) indicates addition of PBS to induce dissociation. Binding was detected with an anti-human Fc biosensor. Values on y-axis indicate binding response signals recorded for 3 different concentrations of SARS-CoV-2 Spike RBD (318-541) Recombinant Protein (8xHis-Tag) #48801 (62.5, 125, and 250 nM).

Immobilized Human ACE2 (18-615) Recombinant Protein (hFc-Tag)

In Solution SARS-CoV-2 Spike (trimeric) (16-1208) Recombinant Protein (8xHis-Tag) #65444 (blue)  
SARS-CoV-2 Spike RBD (318-541) Recombinant Protein (8xHis-Tag) #48801 (red)



Binding response kinetics between Human ACE2 (18-615) Recombinant Protein (hFc-Tag) (immobilized), SARS-CoV-2 Spike (trimeric) (16-1208) Recombinant Protein (8xHis-Tag) #65444 (in solution, 250 nM, blue), and SARS-CoV-2 Spike RBD (318-541) Recombinant Protein (8xHis-Tag) #48801 (in solution, 250 nM, red). The vertical red line (180 sec) indicates addition of PBS to induce dissociation. Binding was detected with an anti-human Fc biosensor. Values on y-axis indicate binding response signals recorded for each protein in solution at the indicated concentration.

Thank you for your recent purchase. If you would like to provide a review visit [cellsignal.com/comments](http://cellsignal.com/comments).

[www.cellsignal.com](http://www.cellsignal.com)

© 2020 Cell Signaling Technology, Inc.

Cell Signaling Technology is a trademark of Cell Signaling Technology, Inc.

**Applications:** W—Western IP—Immunoprecipitation IHC—Immunohistochemistry ChIP—Chromatin Immunoprecipitation IF—Immunofluorescence F—Flow cytometry E-P—ELISA-Peptide **Species Cross-Reactivity:** H—human M—mouse R—rat Hm—hamster Mk—monkey Mi—mink C—chicken Dm—D. melanogaster X—Xenopus Z—zebrafish B—bovine Dg—dog Pg—pig Sc—S. cerevisiae Ce—C. elegans Hr—Horse All—all species expected **Species** enclosed in parentheses are predicted to react based on 100% homology.