

Store at
4°C

RBC Lysis Buffer (10X)

#46232

100 ml



Cell Signaling
TECHNOLOGY®

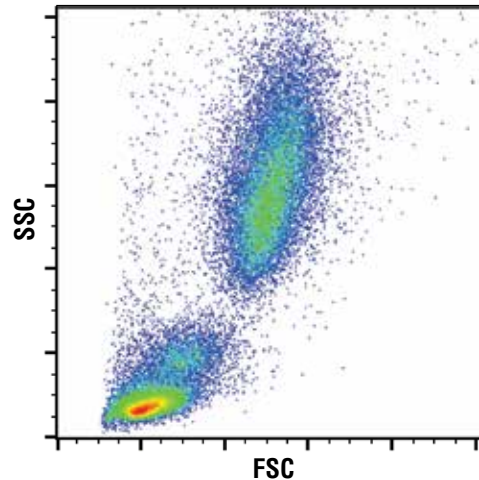
Support: +1-978-867-2388 (U.S.)
www.cellsignal.com/support

Orders: 877-616-2355 (U.S.)
orders@cellsignal.com

New 06/19

For Research Use Only. Not For Use In Diagnostic Procedures.

Description: RBC Lysis Buffer (10X) is a concentrated ammonium chloride-based buffer used for lysing red blood cells in single cell suspension with little to no effect on the nucleated cells. This buffer contains no fixative reagent so the cells remain viable after red blood cell lysis.



Human peripheral blood cells lysed with RBC Lysis Buffer. The scatter profile of lysed cells is shown.

Storage: The 10X solution is stable for 6 months when stored at 4°C.

Directions for Use:

Note: It is recommended to dilute the RBC Lysis Buffer (10X) just prior to use.

1. Dilute the RBC Lysis Buffer (10X) to a 1X working concentration by adding 1 part RBC Lysis Buffer (10X) to 9 parts room temperature deionized water. Warm the solution to room temperature.
2. Add 2.0 ml of 1X RBC Lysis Buffer to the prepared sample of whole blood (50-100 µL per tube), gently vortex the sample.
3. Incubate for 10-15 minutes at room temperature protected from light.
4. Centrifuge cells at 500 x g for 5 minutes at room temperature. Carefully aspirate the supernatant without disturbing the cell pellet.
5. Wash the cells once in excess with Flow Cytometry Antibody Dilution Buffer #13616, repeat the centrifugation in step 4.
6. Resuspend the cells in the appropriate volume for analysis.

Note: Above outlines the necessary steps for lysis of human whole blood samples. If working with mouse blood or splenocytes, decrease the incubation time (step 3) to 5 minutes. Further optimization may be required.

For product specific protocols and a complete listing of recommended companion products please see the product web page at www.cellsignal.com.

Thank you for your recent purchase. If you would like to provide a review visit www.cellsignal.com/comments.

www.cellsignal.com

© 2019 Cell Signaling Technology, Inc.

Cell Signaling Technology is a trademark of Cell Signaling Technology, Inc.

Applications: W—Western IP—Immunoprecipitation IHC—Immunohistochemistry ChIP—Chromatin Immunoprecipitation IF—Immunofluorescence F—Flow cytometry E-P—ELISA-Peptide Species Cross-Reactivity: H—human M—mouse R—rat Hm—hamster Mk—monkey Mi—mink C—chicken Dm—D. melanogaster X—Xenopus Z—zebrafish B—bovine Dg—dog Pg—pig Sc—S. cerevisiae Ce—C. elegans Hr—Horse All—all species expected Species enclosed in parentheses are predicted to react based on 100% homology.