

Store at
4°C

SignalStain® Deep Black Peroxidase Substrate Kit

#72986

1 Kit
(1100 slides)

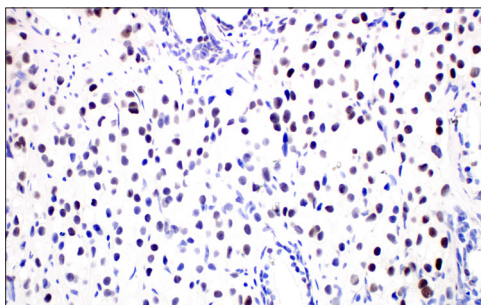
Support: +1-978-867-2388 (U.S.)
www.cellsignal.com/support

Orders: 877-616-2355 (U.S.)
orders@cellsignal.com

For Research Use Only. Not For Use In Diagnostic Procedures.

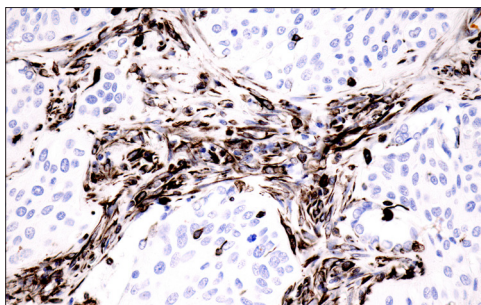
Product Includes	Product #	Quantity
SignalStain® Deep Black Diluent	58345	110 mL
SignalStain® Deep Black Chromogen Concentrate	64379	3 mL

Description: The SignalStain® Deep Black Peroxidase Substrate Kit contains all of the necessary reagents to prepare a working solution of Deep Black for staining tissue sections. The Deep Black working solution is compatible with peroxidase (HRP) detection systems such as the SignalStain® Boost IHC Detection Reagents (HRP, Rabbit #8114, HRP, Mouse #8125, HRP, Rat #72838, and HRP, Goat #63707), yielding a black reaction product that can provide color contrast in pigmented tissues such as melanoma.



Immunohistochemical analysis of paraffin-embedded human prostate carcinoma using Androgen Receptor (D6F11) XP® Rabbit mAb #5153.

Note: Detection was performed with SignalStain® Boost IHC Detection Reagent (HRP, Rabbit) #8114 and SignalStain® Deep Black Peroxidase Substrate Kit.



Immunohistochemical analysis of paraffin-embedded human lung carcinoma using Vimentin (D21H3) XP® Rabbit mAb #5741.

Note: Detection was performed with SignalStain® Boost IHC Detection Reagent (HRP, Rabbit) #8114 and SignalStain® Deep Black Peroxidase Substrate Kit.

Storage: Substrate kit should be stored at 4°C, protected from light. Each kit is stable for 6 months upon receipt if the reagents are not combined.

Directions for Use:

1. To prepare the Deep Black/HRP chromogen-substrate working solution, add 1 drop SignalStain® Deep Black Chromogen Concentrate to 1 mL SignalStain® Deep Black Diluent. Mix well before use. Working solutions are stable for up to 1 day when stored at 4°C. For optimal results, prepare fresh reagent.
2. After incubation with SignalStain® Boost IHC Detection Reagent or other HRP-based detection systems, wash slides and incubate with the working solution at room temperature until staining develops. 5-10 minutes generally provides an acceptable staining intensity.
3. Wash slides for 5 minutes in water.
4. Counterstain, if desired. Deep Black/HRP chromogen-substrate is compatible with Hematoxylin #14166.
5. Slides can be dehydrated through alcohol and cleared with xylene or xylene substitute or can be air dried, then permanently mounted with SignalStain® Aqueous Mounting Medium #27290 or SignalStain® Mounting Medium #14177.

For best color preservation and long-term slide storage, it is recommended to use SignalStain® Mounting Prep Solution #50815.

Appropriate personal protective equipment should be worn when handling Deep Black. Dispose of in accordance with local regulations.

All other trademarks are the property of their respective owners. Visit cellsignal.com/trademarks for more information.

Thank you for your recent purchase. If you would like to provide a review visit cellsignal.com/comments.

www.cellsignal.com

© 2022 Cell Signaling Technology, Inc.

SignalStain and Cell Signaling Technology are trademarks of Cell Signaling Technology, Inc.

Applications: W—Western IP—Immunoprecipitation IHC—Immunohistochemistry CHIP—Chromatin Immunoprecipitation IF—Immunofluorescence F—Flow cytometry FC-FP—Flow cytometry-Fixed/Permeabilized FC-L—Flow cytometry-Live E-P—ELISA-Peptide
Species Cross-Reactivity: H—human M—mouse R—rat Hm—hamster Mk—monkey Mi—mink C—chicken Dm—D. melanogaster X—Xenopus Z—zebrafish B—bovine Dg—dog Pg—pig Sc—S. cerevisiae Ce—C. elegans Hr—Horse
All—all species expected. Species enclosed in parentheses are predicted to react based on 100% homology.