

SignalStain® Antibody Diluent

Small 25 ml

Large 100 ml

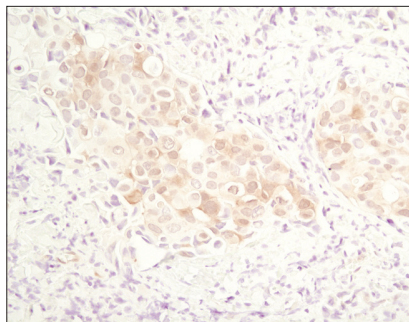
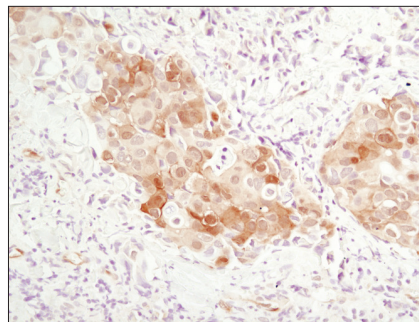


Orders n 877-616-CELL (2355)
orders@cellsignal.com

Support n 877-678-TECH (8324)
info@cellsignal.com

Web n www.cellsignal.com

For Research Use Only. Not For Use In Diagnostic Procedures.



Immunohistochemical analysis of paraffin-embedded human breast carcinoma comparing SignalStain® Antibody Diluent (left) to TBST/normal goat serum (right) using Phospho-Akt (Ser473) (D9E) Rabbit mAb #4060.

Description: SignalStain® Antibody Diluent is for use in immunohistochemical assays. It yields superior staining with a number of antibodies. This diluent can improve IHC signal and background; however, it is not compatible with all of Cell Signaling Technology's products that are recommended for use in immunohistochemical assays. Please consult the IHC protocol on the antibody product page to determine if SignalStain® Antibody Diluent is recommended for your product of interest.

Directions for Use: Use as a primary antibody diluent in immunohistochemical assays. Dilute primary antibody in SignalStain® Antibody Diluent as directed on the antibody datasheet.

Storage: SignalStain® Antibody Diluent is supplied as a working solution. This product is stable for 12 months when stored at 4°C.

Please visit www.cellsignal.com for a complete listing of recommended companion products.