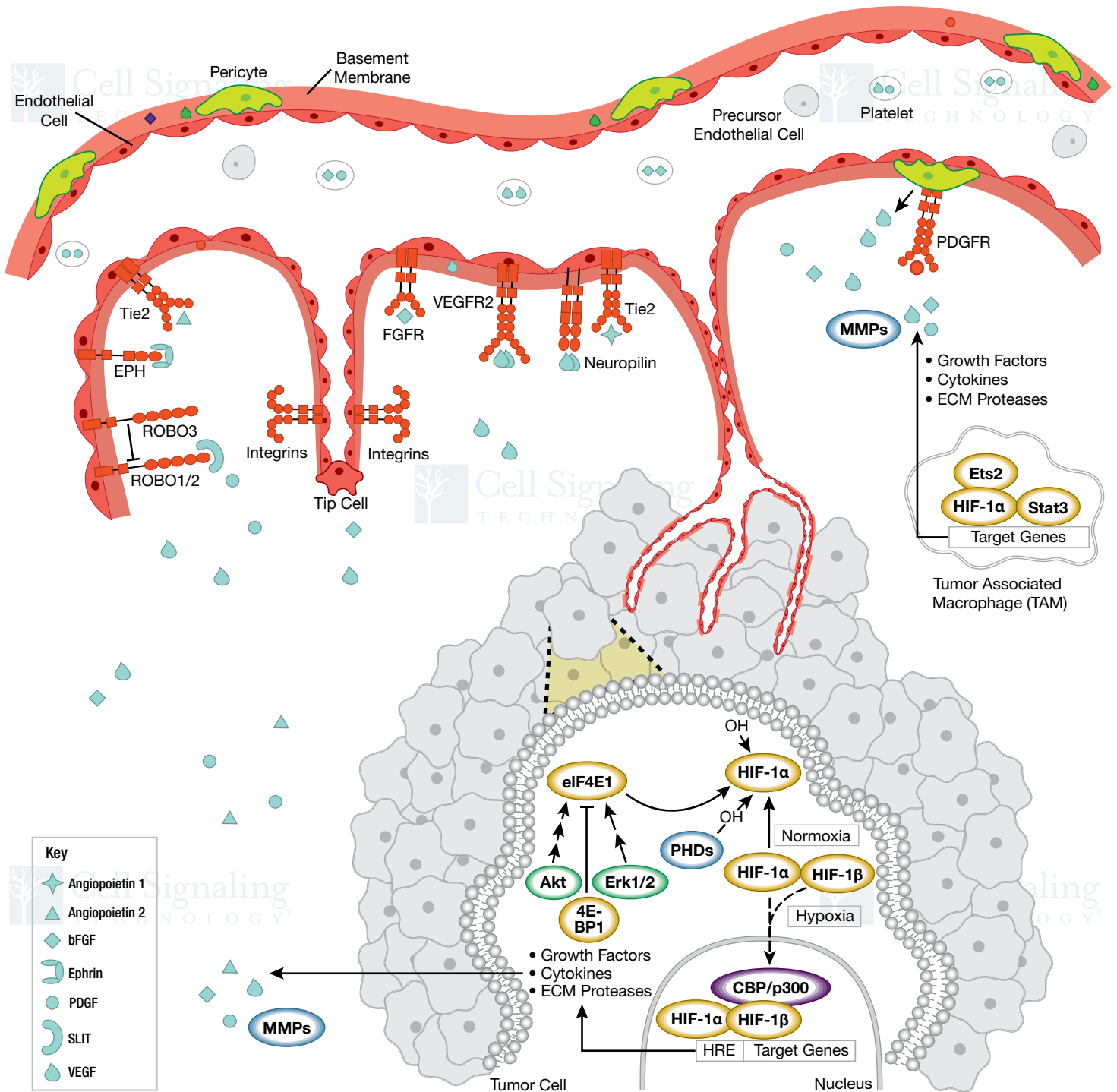




# Tumor Angiogenesis



rev. 01/15/20

## Pathway Diagram Key

© 2003–2020 Cell Signaling Technology, Inc.

◉ Acetylase	◊ Apoptosis/Autophagy Regulator	◌ Deacetylase or Cytoskeletal Protein	◈ GTPase/GAP/GEF	◊ Metabolic Enzyme	◉ Phosphatase	◌ Ubiquitin/SUMO Ligase or Deubiquitinase	◉ Receptor
◊ Adaptor	◉ Cell Cycle Regulator	◌ Growth Factor/Cytokine/Development Protein	◈ Kinase	◊ Methyltransferase or G-protein	◉ Protein Complex	◌ Transcription Factor or Translation Factor	◉ Other
— Direct Process		- - - Tentative Process	· · · · · Translocation Process	→ Stimulatory Modification	⊣ Inhibitory Modification	⌞ Transcriptional Modification	