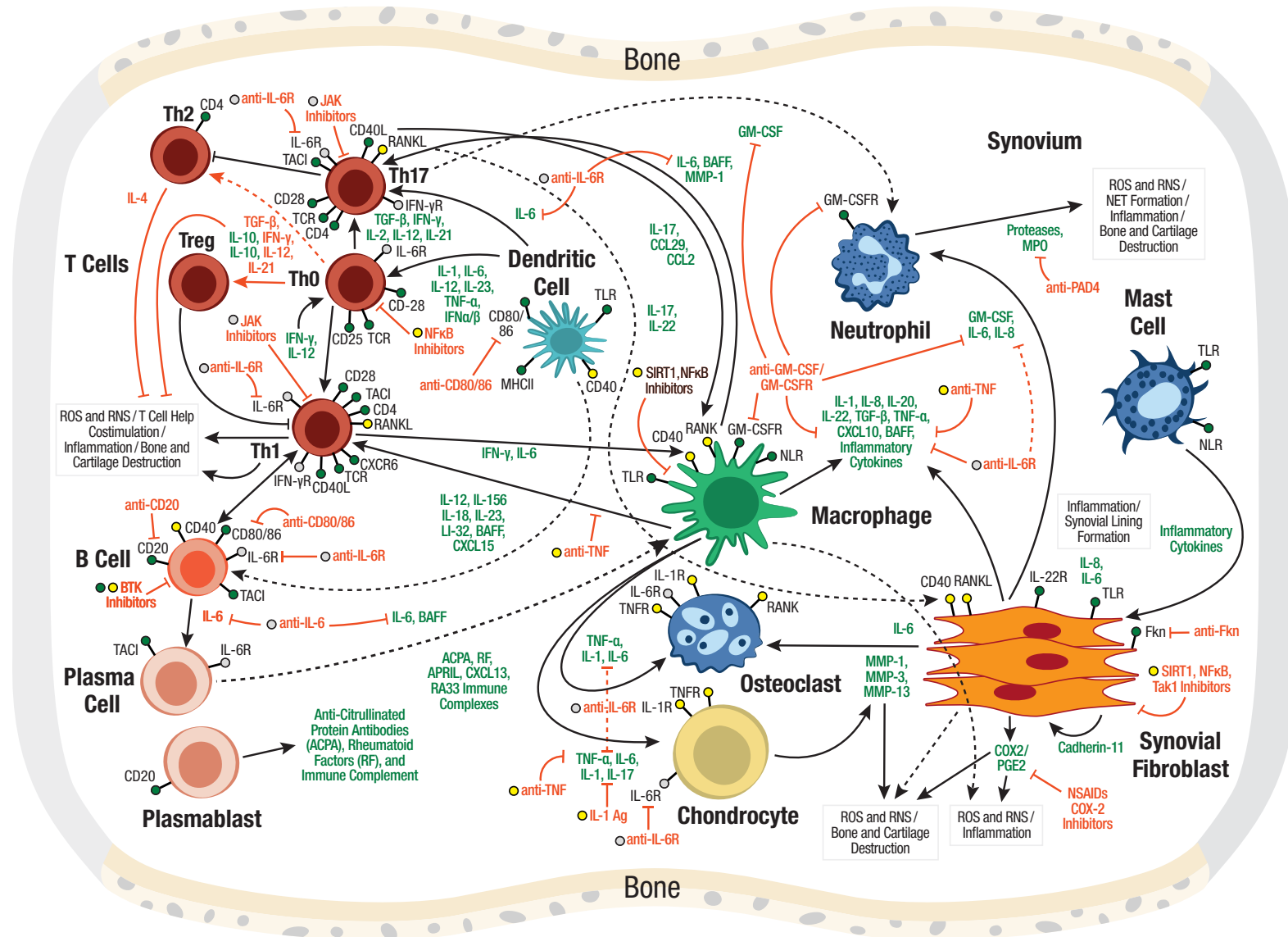


Rheumatoid Arthritis Pathogenesis



For pathway key and background, please visit:
www.cst-science.com/pathway



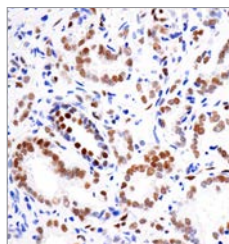
Key Products for Rheumatoid Arthritis Pathogenesis

Visit www.cellsignal.com for a full listing of antibodies, related kits, and reagents.

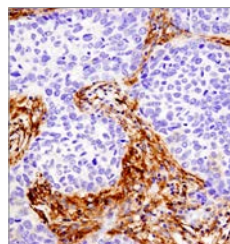
PRODUCTS	APPLICATIONS	REACTIVITY
67824 ASC/TMS1 (D2W8U) Rabbit mAb (Mouse Specific)	WB, IP, IHC-P, IF-F, IF-IC, F	M
17507 ASC/TMS1 (D2W8U) Rabbit mAb (Mouse Specific) (Alexa Fluor® 488 Conjugate)	IF-IC, F	M
2873 ATM (D2E2) Rabbit mAb	WB	H, M
98033 Caspase-1 (E4R8K) Rabbit mAb	WB, IHC-P	H
89332 Cleaved Caspase-1 (Asp296) (E2G2I) Rabbit mAb	WB, IP	M, (R)
4199 Cleaved Caspase-1 (Asp297) (D57A2) Rabbit mAb	WB, IP	H, (Mk)
78588 CD3ε (E4T1B) XP® Rabbit mAb	WB, IP, IHC-Bond, IHC-P, IF-F	M
85061 CD3ε (D7A6E™) XP® Rabbit mAb	WB, IP, IHC-Bond, IHC-P	H, Mk
26582 CD3 (17A2) Rat mAb (redFluor™ 710 Conjugate)	IF-F, F	M
48274 CD4 (EP204) Rabbit mAb	IHC-Bond, IHC-P	H
25229 CD4 (D7D2Z) Rabbit mAb	WB, IHC-Bond, IHC-P	M, R
96127 CD4 (RM4-5) Rat mAb (FITC Conjugate)	IF-F, F	M
98941 CD8α (D4W2Z) XP® Rabbit mAb (Mouse Specific)	WB, IHC-Bond, IHC-P	M
85336 CD8α (D8A8Y) Rabbit mAb	WB, IP, IHC-P, F	H
64786 CD8α (2.43) Rat mAb (APC Conjugate)	IF-F, F	M
86165 CD40 (E2Z7I) Rabbit mAb	WB, IP, IHC-Bond, IHC-P	M
40868 CD40 (D8W3N) Rabbit mAb	WB, IHC-Bond, IHC-P	H
15094 CD40 Ligand (D5J9Y) Rabbit mAb	WB, IP, IHC-P	H
13917 CD45 (Intracellular Domain) (D9M8I) XP® Rabbit mAb	WB, IP, IHC-P, IF-IC, F	H, Mk
98819 CD45 (D3F8Q) Rabbit mAb (BSA and Azide Free)	IHC-Bond, IHC-P, IF-F, IF-IC	M
19581 CD45 (D3F8Q) Rabbit mAb (Alexa Fluor® 555 Conjugate)	IF-F, IF-IC	M

PRODUCTS	APPLICATIONS	REACTIVITY
72031 CD57 (HNK-1) Mouse mAb	IHC-Bond, IHC-P, IF-IC	H
72031 CD68 (D4B9C) XP® Rabbit mAb	IHC-P, IF-IC, F	H
97778 CD68 (E307V) Rabbit mAb	WB, IHC-Bond, IHC-P, IF-F, IF-IC, F	M
51644 CD68 (E307V) Rabbit mAb (Alexa Fluor® 488 Conjugate)	IF-F, IF-IC, F	M
24595 CD206/MRC1 (E6T5J) XP® Rabbit mAb	WB, IP, IHC-Bond, IHC-P, IF-F	H, M, R, Mk
59414 CD206/MRC1 (E6T5J) XP® Rabbit mAb (Alexa Fluor® 594 Conjugate)	IF-F	H, M, R
12311 DNA-PKcs (3H6) Mouse mAb	WB, IHC-P, IF-IC	H, Mk
70076 F4/80 (D2S9R) XP® Rabbit mAb	WB, IP, IHC-P	M
66562 FAP (E1V9V) Rabbit mAb	WB, IP, IF-IC	H
39754 Gasdermin D (E9S1X) Rabbit mAb	WB, IP	H, M, R, Hm
36425 Cleaved Gasdermin D (Asp275) (E7H9G) Rabbit mAb	WB, IP, IHC-P	H
10137 Cleaved Gasdermin D (Asp276) (E3E3P) Rabbit mAb	WB	M
4814 IκBα (L35A5) Mouse mAb (Amino-terminal Antigen)	WB, IP, IHC-P, IF-IC, F	H, M, R, Mk, B, Pg
7523 IκBα (L35A5) Mouse mAb (Amino-terminal Antigen) (PE Conjugate)	F	H, M, R, Mk, B, Pg
12703 IL-1β (D3U3E) Rabbit mAb	WB, IF-IC, F	H
12242 IL-1β (3A6) Mouse mAb	WB, IHC-P	H, M
12912 IL-6 (D5W4V) XP® Rabbit mAb (Mouse Specific)	WB, IP, IF-IC, F	M
13797 IL-6 (D5W4V) XP® Rabbit mAb (Mouse Specific) (PE Conjugate)	F	M
18935 IL-6Ra/CD126 (E5B3P) Rabbit mAb	WB, IP, IF-IC, F	H
3230 Jak2 (D2E12) XP® Rabbit mAb	WB, IP, IHC-P	H, M, R, (Hm, Mk, C, X, B, Dg, Pg, Hr)

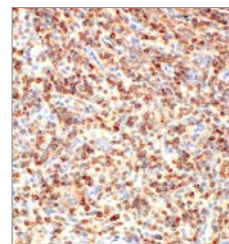
PRODUCTS	APPLICATIONS	REACTIVITY
3776 Phospho-Jak2 (Tyr1007/1008) (C80C3) Rabbit mAb	WB	H, M, R, (Mk, B)
63125 FastScan™ Phospho-Jak2 (Tyr1007/1008) ELISA Kit	ELISA	H, M
68258 MHC Class II (LGII-612.14) Mouse mAb	WB, IP, IHC-Bond, IHC-P, F	H
4847 Mre11 (31H4) Rabbit mAb	WB, IP, IHC-P	H
4895 Mre11 Antibody	WB, IP, IHC-P	H, M, R, Mk
8242 NF-κB p65 (D14E12) XP® Rabbit mAb	WB, IP, IHC-P, IF-IC, F, ChIP, ChIP-seq, C&R	H, M, R, Hm, Mk, Dg
3033 Phospho-NF-κB p65 (Ser536) (93H1) Rabbit mAb	WB, IP, IF-IC, F	H, M, R, Hm, Mk, Pg, (Dg)
4887 Phospho-NF-κB p65 (Ser536) (93H1) Rabbit mAb (Alexa Fluor® 647 Conjugate)	F	H, M, R, Hm, Mk, Pg, (Dg)
26981 Podoplanin (LpMab-12) Mouse mAb	IHC-P, F	H
9139 Stat3 (124H6) Mouse mAb	WB, IP, IHC-P, IF-IC, F, ChIP	H, M, R, Mk
9145 Phospho-Stat3 (Tyr705) (D3A7) XP® Rabbit mAb	WB, IP, IHC-Bond, IHC-P, IF-IC, F, ChIP, ChIP-seq	H, M, R, Mk, (Hm, B, Pg, Hr)
8119 Phospho-Stat3 (Tyr705) (D3A7) XP® Rabbit mAb (PE Conjugate)	F	H, M, R, Mk, (Hm, B, Pg, Hr)
16242 FastScan™ Phospho-Stat3 (Ser727) ELISA Kit	ELISA	H, M, R, Mk
11948 TNF-α (D2D4) XP® Rabbit mAb (Mouse Specific)	WB, IP, IF-IC, F	M
87509 TNF-α (D2D4) XP® Rabbit mAb (Alexa Fluor® 488 Conjugate)	F	M
8184 TNF-α (D1G2) Rabbit mAb (IF/Flow Preferred)	WB, IP, IF-IC, F	H
96865 TNF-α (D1G2) Rabbit mAb (PE-Cy7® Conjugate)	F	H
13801 Thy1/CD90 (D3V8A) Rabbit mAb	WB, IHC-P	H, M, R



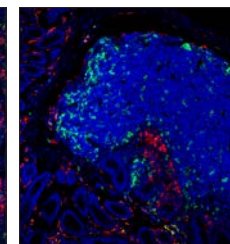
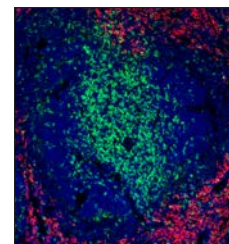
Phospho-Stat3 (Tyr705) (D3A7) XP® Rabbit mAb #9145: IHC analysis of paraffin-embedded human prostate adenocarcinoma using #9145 performed on the Leica® BOND™ Rx.



Podoplanin (LpMab-12) Mouse mAb #26981: IHC analysis of paraffin-embedded human colon carcinoma using #26981.



CD45 (Intracellular Domain) (D9M8I) XP® Rabbit mAb #13917: IHC analysis of paraffin-embedded normal cynomolgus monkey spleen using #13917.



CD4 (RM4-5) Rat mAb (FITC Conjugate) #96127: Confocal IF-IC analysis of mouse spleen (left) or a Peyer's patch (right) using CD4 (RM4-5) Rat mAb (FITC Conjugate) (green) and F4/80 (D4C8V) XP® Rabbit mAb #30325 (red). Sections were mounted in Prolong® Gold Antifade Reagent with DAPI #8961 (blue).